



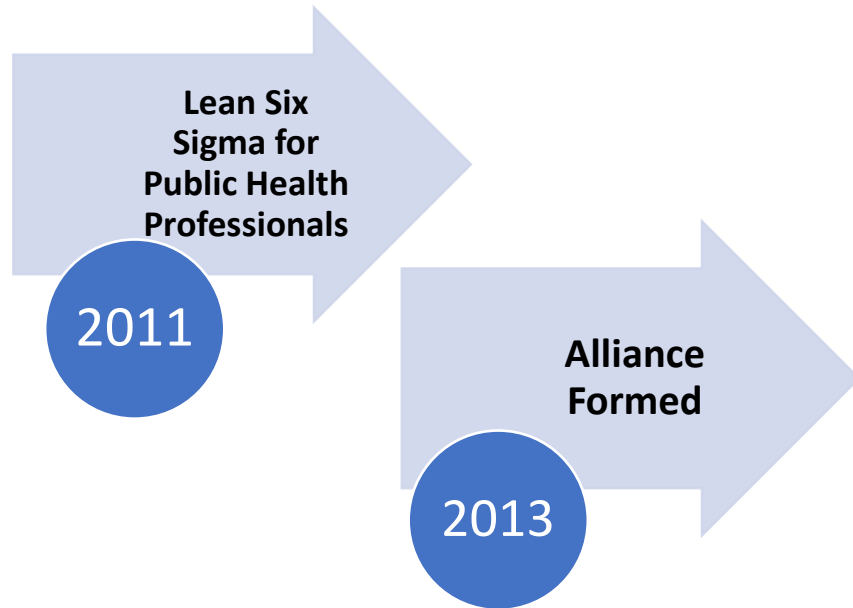
**Health
Improvement
Alliance**
of St. Joseph County

Let's talk about Health First Indiana / SB4

Agenda

- Welcome – Jessica Brookshire
- Health Improvement Alliance of St. Joseph County
- Health First Indiana / SB4 Overview
- Kreg Gruber, Chief Executive Officer, Beacon Health System
- Chris Karam, President, Saint Joseph Health System
- Rose Meissner, President, Community Foundation of St. Joseph County
- Trina Robinson, President of the South Bend NAACP
- Questions & Next Steps

Health Improvement Alliance History



Health Improvement Alliance

Who we are

- **Vision**

To be the healthiest county in Indiana.

- **Mission**

The Health Improvement Alliance of St. Joseph County works to improve the overall health and well-being of our community by facilitating partnerships, growing opportunities, and creating a strong public health infrastructure and workforce.

- **Our Goal**

To improve the health of our community by working collaboratively to decrease duplication of services and increase the utilization of existing services and resources.

Health First Indiana - Background / Timeline

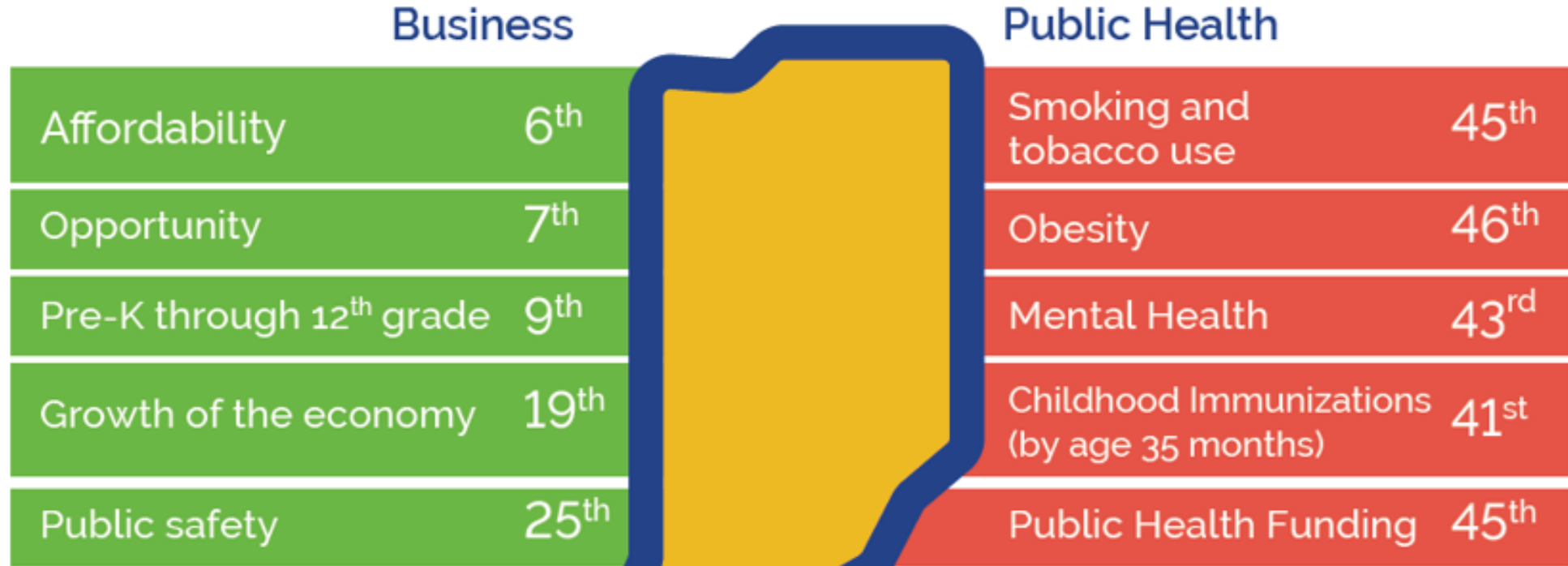
- August 2021 - Governor Holcomb established the 15-member Governor's Public Health Commission
- August 2022 - Commission delivered a final report with recommendations
- 2023 Legislation Session, signed April 2023
- June 2023 - Governor's Public Health Commission became known as Health First Indiana
- **Summer 2023 – County Commissioners to determine position (OPT IN or OPT OUT)**
 - [Local Public Health Funding for 2024 and 2025](#)
- County budgets and opt in is due by September 1, 2023
- Money is available January 1, 2024

Health First Indiana -



- Goal: To ensure that every Hoosier has access to the core public health services that allow them to achieve their optimal health and wellbeing.

How Indiana Ranks Nationally



Source: U.S. News and World Report, 2021

Source: America's Health Rankings 2021


Public Health Funding Findings

- Indiana ranked **45th for state government public health expenditures** (2018 Census Bureau)
- The revenue of **90 of our 94** local health departments **is below the National 25th percentile**
- Most of our local public health funding comes from the local government, ~70% , many times from property taxes.
- Across the nation this is reversed in many states, where the State government is the bulk of the funding for a local public health department.
- Funding per capita ranges from \$1.25 to \$83 (Marion Co) across our state

Future of Public Health

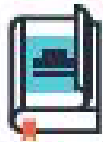
- Increased recurring state investment in public health
- Additional funding would support consistent delivery of core public health services in every local health jurisdiction
- Local elected officials in each jurisdiction get to decide whether to opt-in to additional funding and agree to provide core services.
- Increased coordination and collaboration at regional, district and local levels with additional state support for local health departments
- Recognition that services best support Hoosiers when delivered locally

How St. Joseph County Ranks



<u>Health Factor</u>	<u>National</u>	<u>St. Joseph</u>
Life Expectancy	78.5	76.3
Excessive Drinking	19%	17%
Adult Obesity Rate	32%	36.3%
Adult Tobacco Use	16%	19%
Infant Mortality Rate (per 1,000)	5.6	8.7
Teen Births, 15 to 19yrs (per 1,000)	19	23
Heart Disease Mortality Rate (per 1,000)	317.4	337.1
Cancer Mortality Rate (per 100,000)	152.4	172.1
Adult Diabetes Mortality Rate (per 100,000)	31.1	29.1

Source:
Health Equity Report
2022, St. Joseph
County Department
of Health



Vital Records

- Provide timely certificates through trained on-staff registrar



Communicable Disease Control

Food Protection

- Conduct inspections, foodborne illness investigations



Immunizations

- Provide access and clinics



Infectious Disease Surveillance and Prevention

- Review data, identify and investigate outbreaks



Tuberculosis Control and Case Management

- Coordinate clinical needs and provide education



Tattoo, Body Piercing, Eyelash Safety and Sanitation

- Respond to complaints and apply the state rules



Access and Linkage to Clinical Care

- Include at least one full-time public health nurse on staff and after-hours access



Health-Related Areas during Emergencies/Disasters

- Staff includes dedicated preparedness coordinator on staff, and ensure resources are available in an emergency



Chronic Disease and Injury Prevention

Tobacco Prevention and Cessation

- Promote prevention and cessation, such as cessation programs or supporting a tobacco control coalition



Trauma and Injury Prevention

- Promote safety to reduce harm, such as injury prevention initiatives. Examples include child safety seat trainings, overdose education, and programs to prevent older adult falls,



Screenings and referrals

- Screen for chronic diseases such as obesity, diabetes and cancer.



Environmental Public Health

- Investigate complaints, help ensure well water quality and inspect swimming pools



Maternal, Child and Family Health

Fatality Review

- Participate in review teams and develop prevention strategies



Maternal and Child Health

- Provide linkages to care and promote safe sleep



School Health Liaison

- Support school needs, including vision, hearing and dental screenings
- Partner with schools to promote whole child health



Lead Case Manager and Risk Assessment

- Identify exposure risk and ensure no-cost testing for children younger than 7 years

Health First Indiana / SB4 Funding

OPT IN

2024

\$3,172,602.00 - \$4,230,136.00

County Match: Ave. of county tax levy-related funds distributed in 2021, 2022, 2023

2025

\$6,345,204.00 - \$8,460,272.00

County Match: \$1.3M - \$1.8M

OPT OUT

Legacy amount from Local Health Maintenance Fund / Trust

\$166,329.01

Community Leadership



Kreg Gruber
Chief Executive Officer
Beacon Health System

Community Leadership



Chris Karam
President
Saint Joseph Health System

Community Leadership



Rose Meissner
President
Community Foundation of
St. Joseph County

Community Leadership



Trina Robinson
President
South Bend NAACP

Community Leadership

What would the implications be if St. Joseph County chose not to OPT IN?

Community Leadership

What are your hopes for the future for your organization to partner with the community?

Next Steps Educate & Activate!

- Learn more - [Healthalliancesjc.org](https://healthalliancesjc.org)
 - Governor's Public Health Commission Full Report
 - [Governor's Public Health Commission - Current State of Public Health in Indiana](#)
 - [Indiana Funding Map](#)
 - St. Joseph County Fact Sheet (handed out this evening)
 - St. Joseph County Funding Information
- Advocate
 - Elected Officials - <https://www.sjcindiana.com/27/Government>
 - Friends
 - Colleagues